



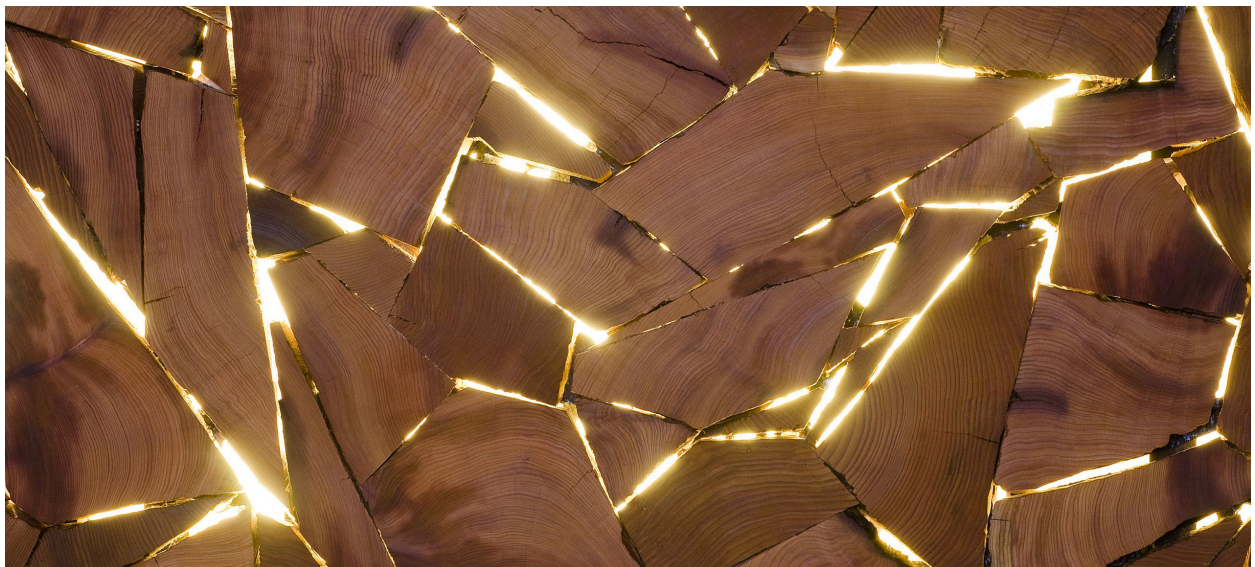
CUSTOM | **SHATTERED DISC - SQUARE** | Western red cedar, Clear Hardwax Oil | 36" x 36"

# Shattered Disc

---

Within the Shattered Disc collection, the concept of released energy has been taken one step further by embedding low voltage LED lights in the small fissures between the sections of wood of which these pieces are composed. This creates a luminosity that radiates from within the pieces, giving the impression that they are literally bristling with electricity and bursting with energy.

The pieces in the Shattered line embody the human need to create order out of chaos and convey the idea of energy being released during the exuberant process of creation.





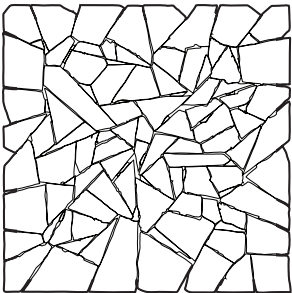


CUSTOM | **SHATTERED WALL PIECE** | Western red cedar, Ebony Hardwax Oil | 48" x 84" x 3"D



SH-S-1A | **SHATTERED DISC - SQUARE** | Western red cedar, Clear Hardwax Oil | 28" x 28" x 3"D

**SHATTERED DISC  
SQUARE**



<b>WESTERN RED CEDAR</b>  (Clear Hardwax Oil / Scorched)  CSA Certified LED components: 110V Plug with 12V Low-Voltage Transformer	SH-S-1A	28"W x 28"H x 3"D	35 lbs.	\$6,500
		71cm x 71cm x 8cm	16 kg.	
	SH-S-1B	36"W x 36"H x 3"D	58 lbs.	\$7,200
		91cm x 91cm x 8cm	26 kg.	

Additional charges apply for the Scorched finish.



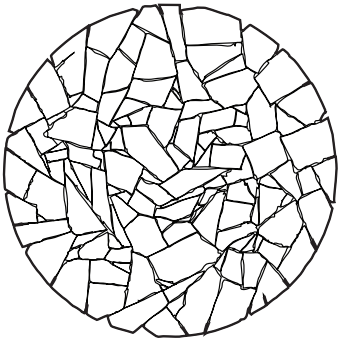


SH-SP5 | **SHATTERED DISC** | Western red cedar, Clear Hardwax Oil | 40" Dia.



SH-L-1 | **SHATTERED DISC - ROUND** | Western red cedar, Clear Hardwax Oil | 40" Dia.

**SHATTERED DISC  
ROUND**



<b>WESTERN RED CEDAR</b>  (Clear Hardwax Oil / Scorched)  CSA Certified LED components: 110V Plug with 12V Low- Voltage Transformer	SH-L-0	36" Dia. x 3"D. 91cm Dia. 7.6cm D.	50 lbs. 23 kg	\$6,700
	SH-L-1	40" Dia. x 3"D. 102cm Dia. 7.6cm D.	62 lbs. 28 kg	\$7,500
	SH-L-2	48" Dia. x 3"D. 122cm Dia. 7.6cm D.	90 lbs. 41 kg.	\$8,750
	SH-L-3	60" Dia. x 3"D. 152cm Dia. 7.6cm D.	140 lbs 63 kg.	\$10,250

Additional charges apply for the Scorched finish.